

Musical MIDI Accompaniment



Chord Reference Manual

This document was prepared from version 1.1 of MMA.

Bob van der Poel
Wynndel, BC, Canada

bob@mellowood.ca

March 7, 2007

Chapter 1

Chord Reference

This document is a reference to the chords and scales use in *MtA*. It has been generated directly from the module `chordtable.py` in the *MtA* sources. Each section shows the chord name, a brief description, the chord notes for a “C” chord, and the associated scale tones. These chords and scales are used in *MtA* to generate chords, bass, arpeggios, arias, harmonies and scales.

In all cases you will need to preface the name with a chord pitch. For example, the reference for an 11th chord is listed simply as “11”; you would use a “C11” or “Eb11”, etc. in your *MtA* source file. Read the *MtA* Reference Guide if you don’t understand this.

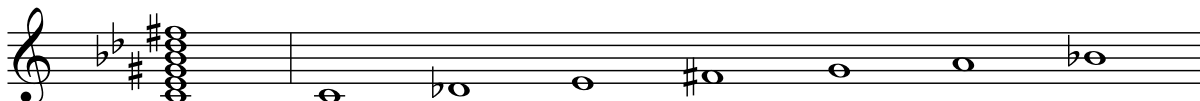
This document was prepared as a reference to verify the correctness of the chords and scales used in *MtA*. If you find an error, please let the author know.

MtA defines 80 unique chords plus 45 aliases. Chords used in *MtA* via aliased names are listed after the main name.

(b5) — Major triad with flat 5th.



+7b9#11 — Augmented 7th with flat 9th and sharp 11th.



11 — 9th chord plus 11th (3rd not voiced).



11 \flat 9 — 7th chord plus flat 9th and 11th.



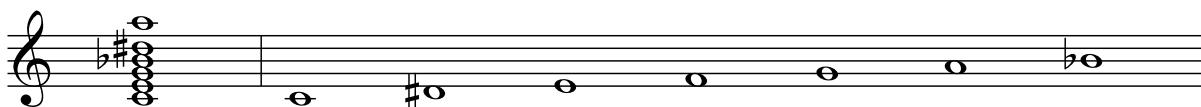
13 — 7th (including 5th) plus 13th (the 9th and 11th are not voiced).



13 \sharp 11 — 7th plus sharp 11th and 13th (9th not voiced).



13 \sharp 9 — 7th (including 5th) plus 13th and sharp 9th (11th not voiced).



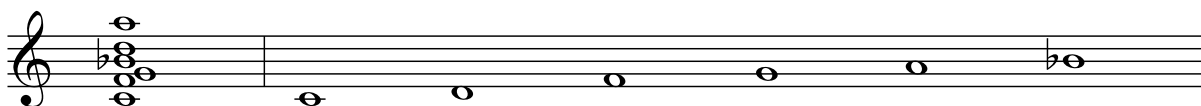
13 \flat 5 — 7th with flat 5th, plus 13th (the 9th and 11th are not voiced).



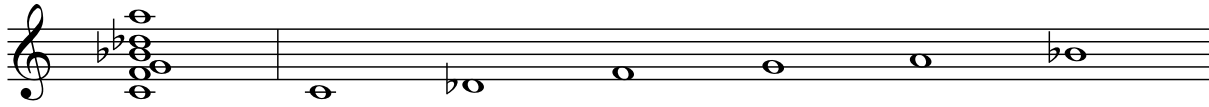
13 \flat 9, M7(add13) — 7th (including 5th) plus 13th and flat 9th (11th not voiced).



13sus — 7sus, plus 9th and 13th



13sus \flat 9 — 7sus, plus flat 9th and 13th



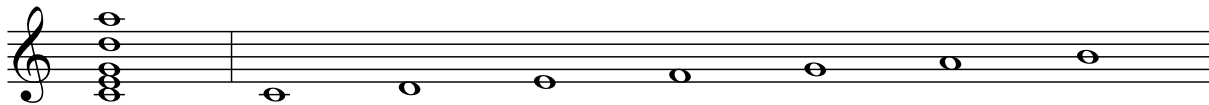
5 — Altered Fifth or Power Chord; root and 5th only.



6, M6 — Major triad with added 6th.



6(add9), 6 \sharp 9 — 6th with added 9th. This is sometimes notated as a slash chord in the form “6/9”.



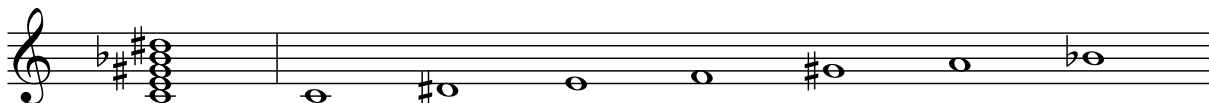
7 — 7th.



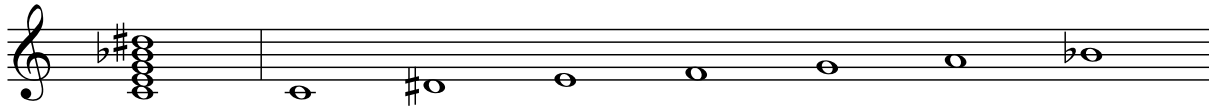
7 \sharp 11 — 7th plus sharp 11th (9th omitted).



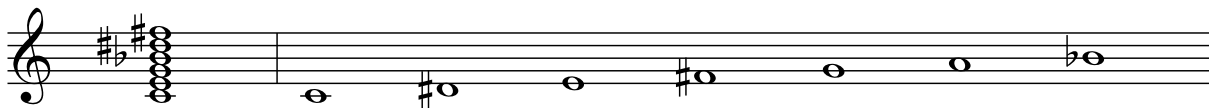
7 \sharp 5 \sharp 9 — 7th with sharp 5th and sharp 9th.



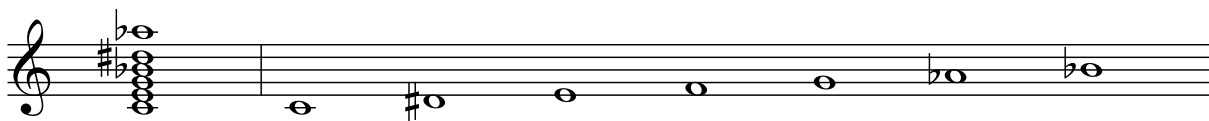
7[#]9, 7+9 — 7th with sharp 9th.



7[#]9[#]11 — 7th plus sharp 9th and sharp 11th.



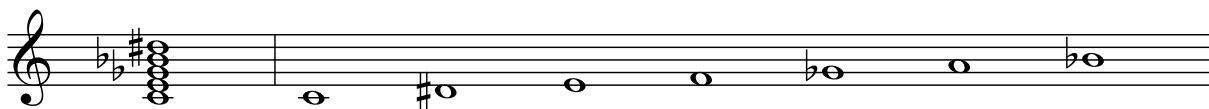
7[#]9^b13 — 7th with sharp 9th and flat 13th.



7^b5, 7-5 — 7th, flat 5.



7^b5[#]9 — 7th with flat 5th and sharp 9th.



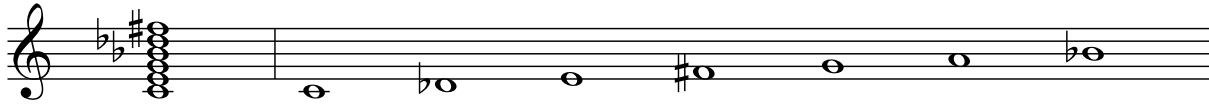
7^b5^b9, 7alt — 7th with flat 5th and flat 9th.



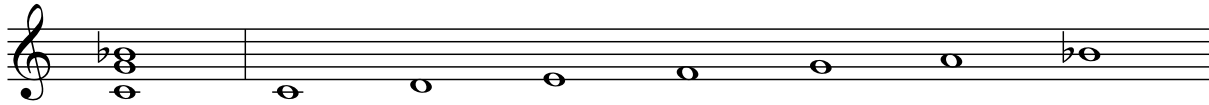
7 \flat 9, 7-9 — 7th with flat 9th.



7 \flat 9 \sharp 11 — 7th plus flat 9th and sharp 11th.



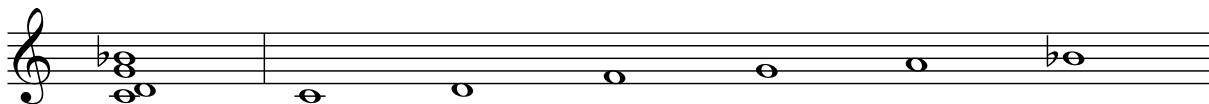
7omit3, 7(omit3) — 7th with unvoiced 3rd.



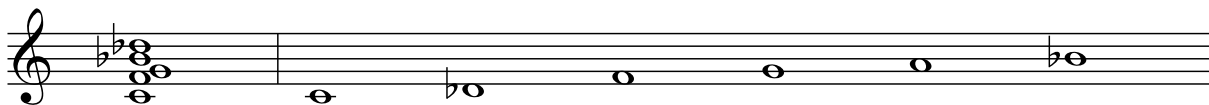
7sus, 7sus4 — 7th with suspended 4th, dominant 7th with 3rd raised half tone.



7sus2 — A sus2 with dominant 7th added.



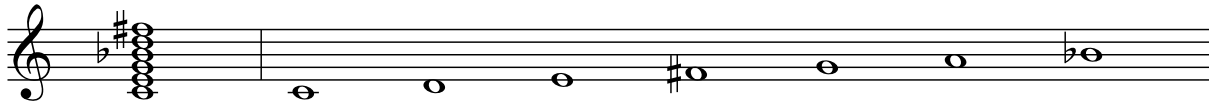
7sus \flat 9 — 7th with suspended 4th and flat 9th.



9 — 7th plus 9th.



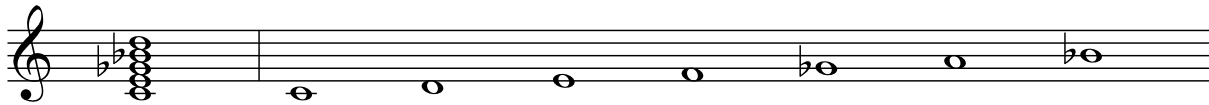
9#11 — 7th plus 9th and sharp 11th.



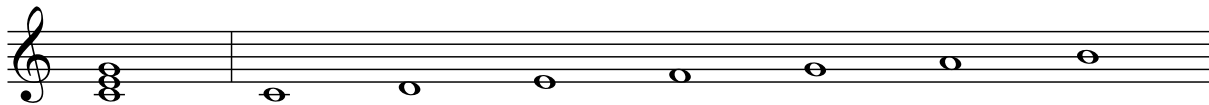
9#5, aug9, +9, 9+5 — 7th plus 9th with sharp 5th (same as aug9).



9b5, 9-5 — 7th plus 9th with flat 5th.



M — Major triad. This is the default and is used in the absense of any other chord type specification.



M13, maj13 — Major 7th (including 5th) plus 13th (9th and 11th not voiced).



M13#11 — Major 7th plus sharp 11th and 13th (9th not voiced).



M7, maj7 — Major 7th.



M7[#]11 — Major 7th plus sharp 11th (9th omitted).



M7[#]5, +M7, M7+5 — Major 7th with sharp 5th.



M7^b5, M7-5 — Major 7th with a flat 5th.



M9, maj9 — Major 7th plus 9th.



M9[#]11 — Major 9th plus sharp 11th.



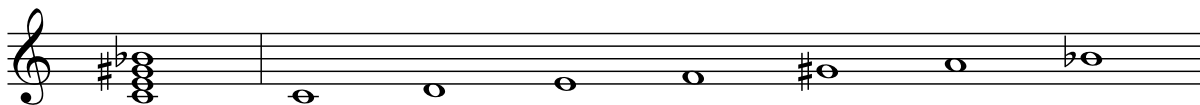
add9 — Major chord plus 9th (no 7th.)



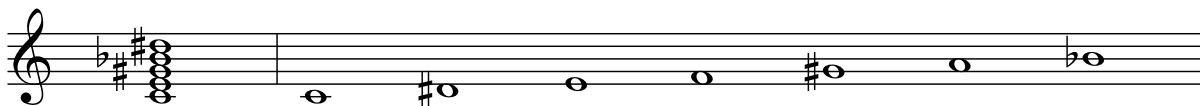
aug, +, #5 — Augmented triad.



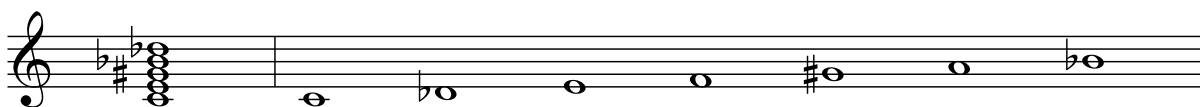
aug7, +7, 7+, 7 \sharp 5, 7+5 — An augmented chord (raised 5th) with a dominant 7th.



aug7 \sharp 9 — An augmented chord (raised 5th) with a dominant 7th and sharp 9th.



aug7 \flat 9, 7 \sharp 5 \flat 9 — An augmented chord (raised 5th) with a dominant 7th and flat 9th.



aug9M7, +9M7 — An augmented chord (raised 5th) with a major 7th and 9th.



dim7, dim — Diminished seventh.



dim7(addM7) — Diminished triad with added Major 7th.



m — Minor triad.



m \sharp 5, m+5 — Minor triad with augmented 5th.



m(sus9), m(add9) — Minor triad plus 9th (no 7th).



m+7 \sharp 9 — Augmented minor 7 plus sharp 9th.



m+7b9 — Augmented minor 7 plus flat 9th.



m+7b9 \sharp 11 — Augmented minor 7th with flat 9th and sharp 11th.



m11 — 9th with minor 3rd, plus 11th.



m11b5 — Minor 7th with flat 5th plus 11th.



m13 — Minor 7th (including 5th) plus 13th (9th and 11th not voiced).



m6 — Minor 6th (flat 3rd plus a 6th).



m6(add9), m69 — Minor 6th with added 9th. This is sometimes notated as a slash chord in the form “m6/9”.



m7 — Minor 7th (flat 3rd plus dominant 7th).



m7#9, m7(#9) — Minor 7th with added sharp 9th.



m7(add11) — Minor 7th plus 11th.



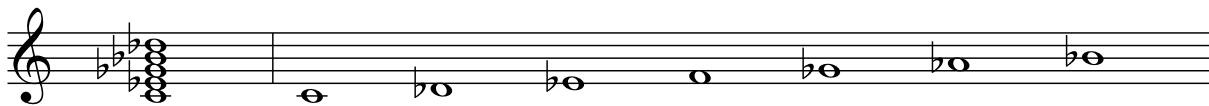
m7(add13) — Minor 7th plus 13th.



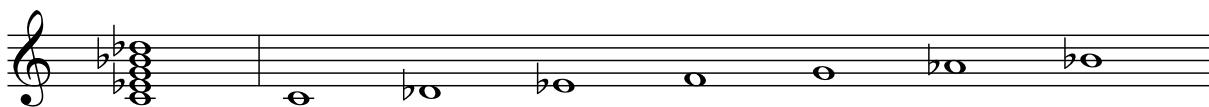
m7b5, m7-5 — Minor 7th, flat 5 (aka 1/2 diminished).



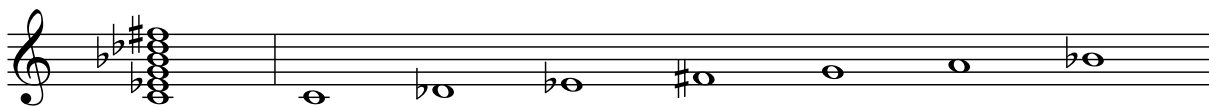
m7b5b9 — Minor 7th with flat 5th and flat 9th.



m7b9, m7(b9) — Minor 7th with added flat 9th.



m7b9#11 — Minor 7th plus flat 9th and sharp 11th.



m7omit5, m7(omit5) — Minor 7th with unvoiced 5th.



m9 — Minor triad plus 7th and 9th.



m9#11 — Minor 7th plus 9th and sharp 11th.



m9b5 — Minor triad, flat 5, plus 7th and 9th.



mM7, m(maj7), m+7, min(maj7), min#7, m#7 — Minor Triad plus Major 7th. You will also see this printed as “m(maj7)”, “m+7”, “min(maj7)” and “min#7” (which *MuA* accepts); as well as the *MuA* invalid forms: “-(Δ7)”, and “min♮7”.



mM7(add9) — Minor Triad plus Major 7th and 9th.



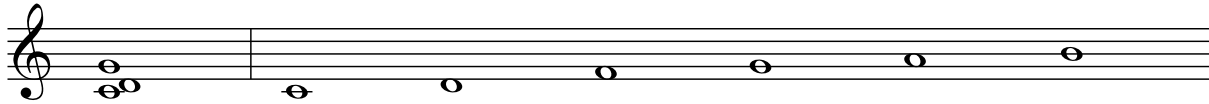
mb5, m(b5), dim3 — Minor triad with flat 5th (aka dim).



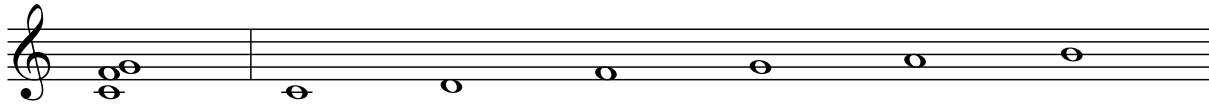
omit3add9, omit3(add9) — Triad: root, 5th and 9th.



sus2 — Suspended 2nd, major triad with the major 2nd above the root substituted for 3rd.



sus4, sus — Suspended 4th, major triad with the 3rd raised half tone.



sus9, 9sus — 7sus plus 9th.



Index of Chords

#5 8	7#5 9	M7+5 8	m6(add9) 11
(b5) 2	7#9 5	M7-5 8	m69 11
+7b9#11 2	7#9b13 5	M9 8	m7 11
+7 9	7#9#11 5	M9#11 8	m7b5 12
+9M7 9	7(omit3) 6	add9 8	m7b5b9 12
+9 7	7+5 9	aug 8	m7b9 12
+M7 8	7+9 5	aug7 9	m7b9#11 12
+ 8	7+ 9	aug7b9 9	m7#9 11
11 2	7-5 5	aug7#9 9	m7(b9) 12
11b9 3	7-9 6	aug9M7 9	m7(#9) 11
13 3	7alt 5	aug9 7	m7(add11) ... 11
13b5 3	7omit3 6	dim3 13	m7(add13) ... 12
13b9 3	7sus 6	dim7 9	m7(omit5) 12
13#11 3	7susb9 6	dim7(addM7) . 9	m7-5 12
13#9 3	7sus2 6	dim 9	m7omit5 12
13sus 3	7sus4 6	m 9	m9 13
13susb9 4	9 6	mb5 13	m9b5 13
5 4	9b5 7	m#5 10	m9#11 13
6 4	9#11 7	m#7 13	mM7 13
6(add9) 4	9#5 7	m(b5) 13	mM7(add9) .. 13
69 4	9+5 7	m(add9) 10	maj13 7
7 4	9-5 7	m(maj7) 13	maj7 7
7b5 5	9sus 14	m(sus9) 10	maj9 8
7b5b9 5	M 7	m+5 10	min#7 13
7b5#9 5	M13 7	m+7b9 10	min(maj7) 13
7b9 6	M13#11 7	m+7b9#11 10	omit3(add9) .. 14
7b9#11 6	M6 4	m+7#9 10	omit3add9 ... 14
7#11 4	M7 7	m+7 13	sus2 14
7#5b9 9	M7b5 8	m11 10	sus4 14
7#5#9 4	M7#11 8	m11b5 10	sus9 14
	M7#5 8	m13 11	sus 14
	M7(add13) 3	m6 11	